



Floor Stripper



Floor Stripper

Easy Removal of a Wide Range of Subfloors. Such as PVC Tile, Rubber Epoxy, Vinyl and Glued-Down Carpets.



株式会社 **ライナックス**

本社 〒359-0027
埼玉県所沢市松郷151-6

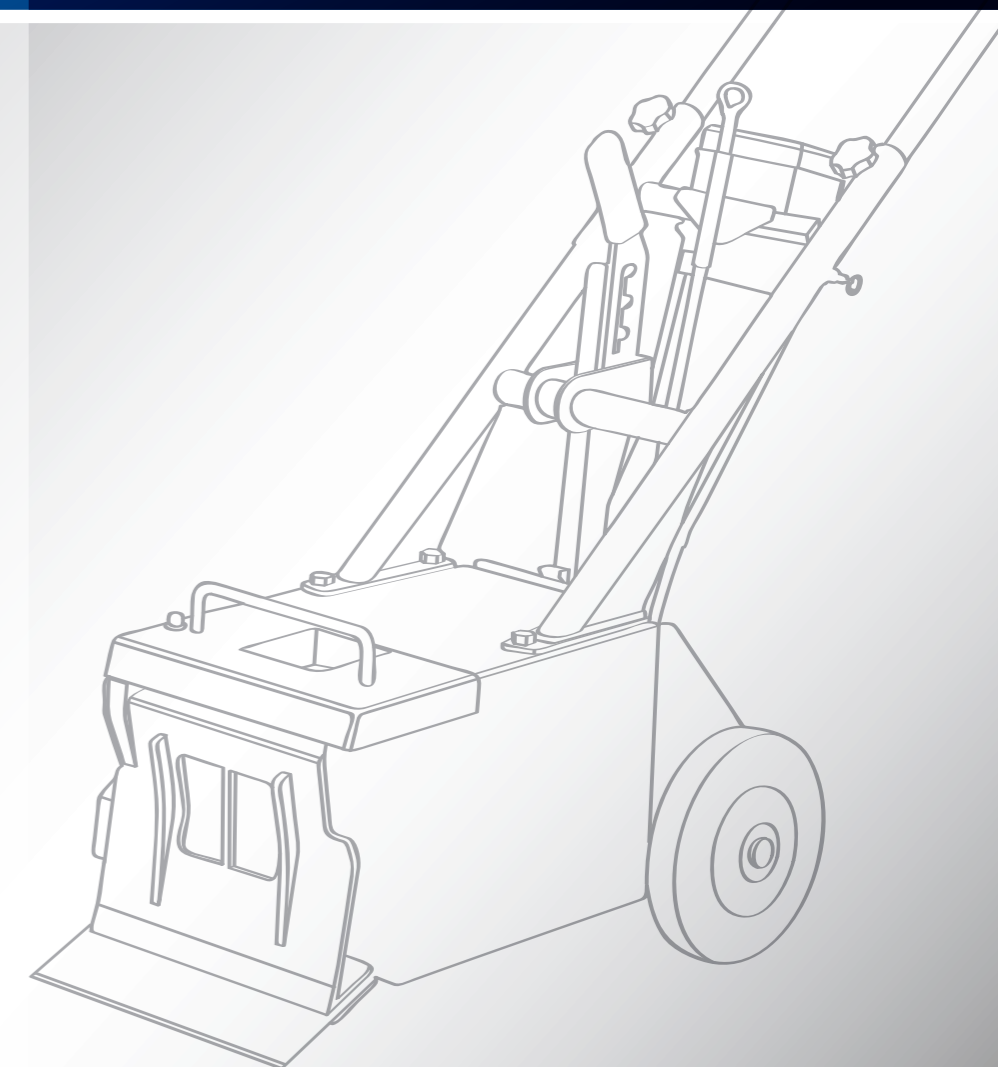
T 04-2946 5211 W www.linax.co.jp
F 04-2946 5212 e linax@linax.net



LINAX CO., LTD.

Head Office: 151-6 Matsugo, Tokorozawa-shi,
Saitama-ken, 359-0027 Japan

T 81-4-2946 5211 W www.linax.co.jp
F 81-4-2946 5212 e linax@linax.net



Floor Stripper series

Maneuverable and powerful for removing various kinds of subfloors such as PVC tile, vinyl chloride tile, etc.



Hammer Trolley

Walk-behind Stripper

Ride-on All-day-battery

	PX-2T Pick Scraper	EH-75T Easy Hammer	VS-3E II Pelleri II	STM II Strato Mobil II		ADB Standard Version	ADB High-speed Version
Power (V)	-	-	220	110 or 220, 50Hz	Running Speed (m/min)	up to 37	up to 60
L x W x H (mm)	1036 x 408 x 894	1100 x 510 x 600~1150	675~970 x 460 x 640~1160	730 x 330 x 1040	L x W x H (mm)	1372 (w/o blade holder) x 622 x 1219 (height w/seat)	1540 (w/o blade holder) x 762 x 1244 (height w/seat)
Total Weight (kg)	20.5	27.5	76	180	Weight (kg) Machine Only	850	Total weight incl. additional weights & front angle plate: 1164
Output (W)	-	-	750	1100 (1.5hp)	Total Weight (kg)	950	
Power Cable	-	-	-	-	Battery Run Time	8~12 working hours	7~10 working hours
Blade Width (mm)	-	-	-	-	Battery Charging Time	8~10 hours	8~10 hours

PX-2T

Pick Scraper

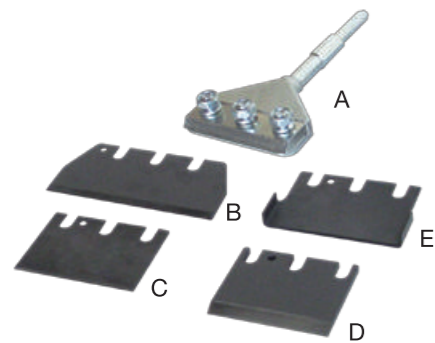
Application - A

For removing subfloors: vinyl tile, sheet vinyl, PVC, cork, etc.



Accessories

- A: PX-2 Shank (Blade holder)
- B: Standard Blade 150 x 75 x 1.5mm
- C: Standard Blade 100 x 75 x 1.2mm
- D: Heavy Duty Blade 90 x 75 x 5.0mm
- E: Self-scoring Blade 110 x 75 x 1.2mm



Features

Easy to Use

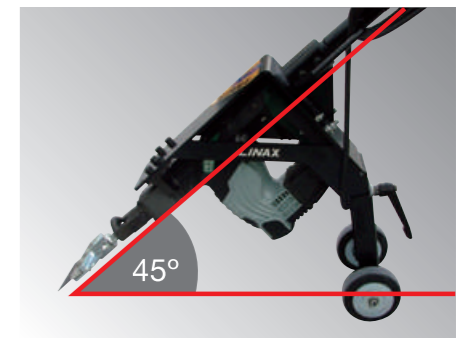
- ▶ Quick and easy to assemble electric hammer clamps into the trolley.
- ▶ Footplate enables forward pressure to be applied improving the speed of demolition.
- ▶ Ergonomic design with built-in shock absorption reduces vibration impact to the user.
- ▶ Designed to work on small to medium-sized areas.



- No more struggling or bending trying to handle heavy electric hammers. The trolley carries most of the weight while the user positions themselves behind the trolley and gently pushes it along.

Electric Hammer and all the accessories are sold separately.

- Adjustable angle to suit most demolition jobs, ranges from 37°-45°.



Fits Electric Hammer models:
Hitachi H41
Hitachi H41SC
Makita HM0830



Application - B

For concrete demolition, removal of hard or thick floor materials (epoxy, polyurethane).



Accessories

- A: 17mm Hex Head S-Chisel (75mm wide) - for Hitachi only.
- B: 17mm Hex Head Chisel (75mm wide) - for Makita / Hitachi.



- Adjustable hand grips to suit operator's working style.



EH-75T

Easy Hammer

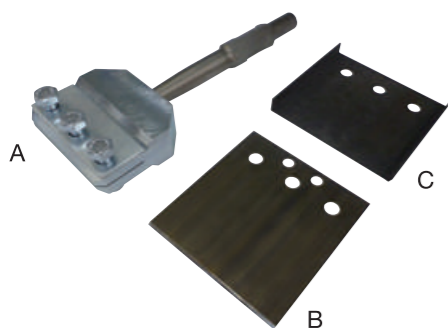
Application - A

For removing subfloors:
vinyl tile, sheet vinyl, PVC, cork, etc.



Accessories

- A: EH-75T Shank (Blade holder)
- B: Standard Blade 150 x 157 x 2.0mm
- C: Self-Scoring Blade 160 x 150 x 2.0mm



Features

Easy to Use

- ▶ Quick and easy to assemble electric hammer clamps into the trolley.
- ▶ Large footplate enables forward pressure to be applied improving the speed of demolition.
- ▶ Ergonomic design with built-in shock absorption reduces vibration impact to the user.



- No more struggling or bending trying to handle heavy electric hammers. The trolley carries most of the weight while the user positions themselves behind the trolley and gently pushes it along.



High Performance

Very rigid structure made from high quality steel components, with a durable silver zinc plated frame.

Electric Hammer and all the accessories are sold separately.

- Mechanical angle adjustment for 5 different positions ranging from 20°-80°.



Application - B

For concrete demolition,
removal of hard or thick floor
materials (epoxy, polyurethane).



Accessories

- 30mm Hex Head Chisel (75mm wide) - for Hitachi, Makita, Bosch.



Fits 16kg Electric Hammer models:

- HITACHI H65
- MAKITA 1304 /1317
- BOSCH GSH16
- MILWAUKEE KANGO 900



VS-3E II

Pelleri II

Standard Accessories

- T-wrench, 12mm
- Blade Cover
- Standard Blade, 280mm
- Heavy Duty Blade, 140mm
- Self-Scoring Blade, 283mm

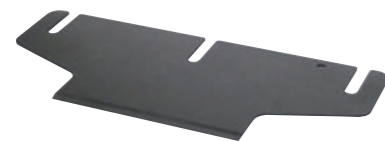


Spare Blades

- Standard Blade 280 x 120 x 1.6mm



- Heavy Duty Blade 140 x 120 x 1.8mm



- Self-Scoring Blade 283 x 125 x 1.6mm



Features

- Equipped with a powerful 1hp motor.
- Designed with a solid and simple structure to work on removing floor coverings, thick coatings, etc.
- Suitable for small and medium-sized job sites.
- Adjustable blade angle and handle height.



The counterweight is removable when scraping light glued materials.



Footplate enables operator to apply more pressure for forward removal action.



Possible to tow the machine when materials are hard to scrape.



Adjustable blade angle from 25° up to 44°.



Lowest Position Highest Position

Adjustable handle height.



Applications



Mainly for removal of vinyl tile, vinyl sheet, elastomeric coatings, polyurethane, thick epoxy coatings, etc. Recommended for removal of soft materials.

STM II

Strato Mobil II

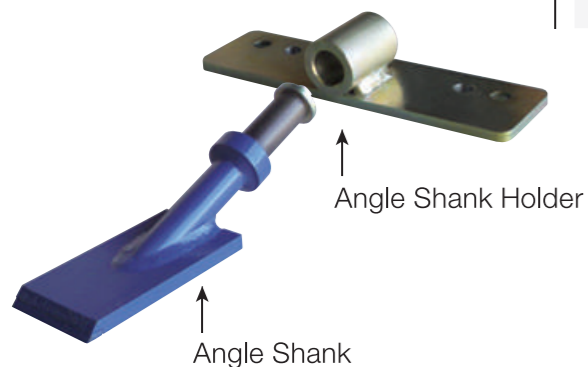
Standard Accessories

- Standard Blade 152mm
- Standard Blade 254mm
- Heavy Duty Blade 254mm
- Self-Scoring Blade 305mm
- Increase Angle Plate
- Transport Wheel Assembly
- 2 Axle Pins
- 20m Extension Cable
- Safety Glasses
- Tool



Optional Accessories

- Angle Shank Attachment



For hard to remove materials such as wood, ceramic and epoxy coatings.

Features

Hydraulic technology is now applied to the well known features of self-propelled removal machines. Compared with other strippers the Hydraulic Strato Mobil works extremely quietly. Also it is very easy to operate due to the automatic drive with both forward and reverse motion. Improved features include:

- Blades can be set at different angles.
- Weights can be adjusted to a position above the blades to change the center of gravity for different uses.
- Weight at the front can easily be removed.
- New frontal guide redirects stripped off material without impeding the forward movement of the machine.

New & Improved Weight System!!



The sliding weight positioned to the back adds extra weight to back wheels.



The sliding weight positioned to the front adds extra weight to cutting head.



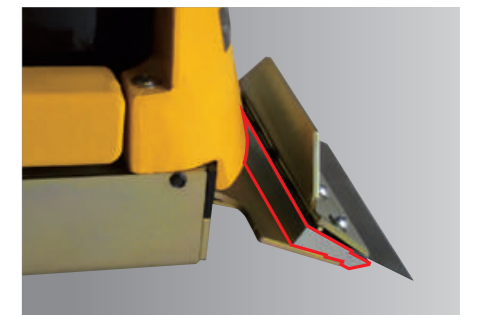
Transport Wheel Assembly

For easy movement and helps to prevent damage to the flooring.



Increase Angle Plate

Extra angle can be added to the cutting head when a steeper angle is required to remove floor materials.



Applications



Specialized in the removal of soft materials:

Glued-down floors, gummy commercial carpet, VCT, solid vinyl, rubber tile, sheet rubber, roofing materials, etc. Please refer to page 13-14 for more optional blade choices.

Ride-on All-Day-Battery

Standard Accessories

- Tool Kit
- Blade Holder 305mm
- Self-Scoring Spare Blade (305 x 76 x 1.6mm)
- 10m Extension Cord for Charging

Ride-on

Optional Accessories Package

Ready for any job!!

The accessories package is a selection of the most popular and most frequently used tools for our ride-on machines.

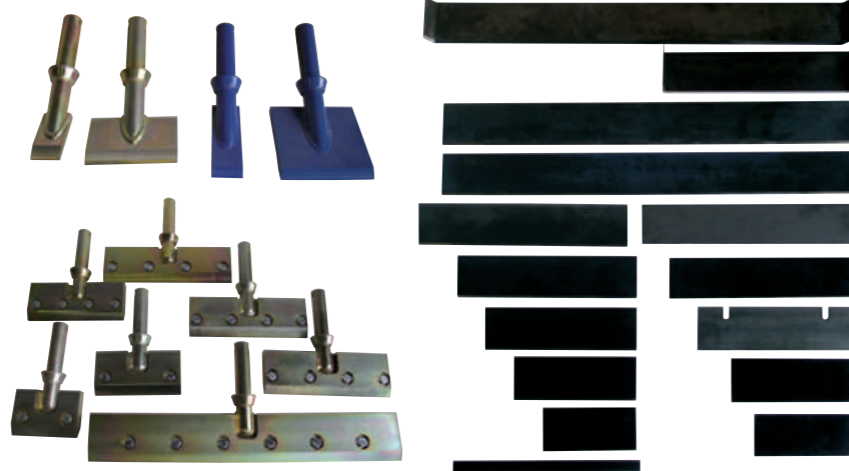
Delivered in a metal carrying case on wheels, complete with: (See Page 13-14)

Accessory Package - Small

- 4 different Blade Holders
- 5-piece Set of Replacement Blades
- 1 Self-Scoring Blade width 305mm (12")
- 1 angled Blade Shank
- 1 Set of Scraper Blades (50 pcs) 305x22mm (12x7/8")

Accessory Package - Large

- 7 different Blade Holders
- 12-piece Set of Replacement Blades
- 2 Self-Scoring Blade width 305mm (12") and 685mm (27")
- 4-piece Set of Blade Shanks
- 1 Set of Scraper Blades (50 pcs) 305x22mm (12x7/8")
- 1 Blade with Collecting Container



Features

ADB - Standard Version

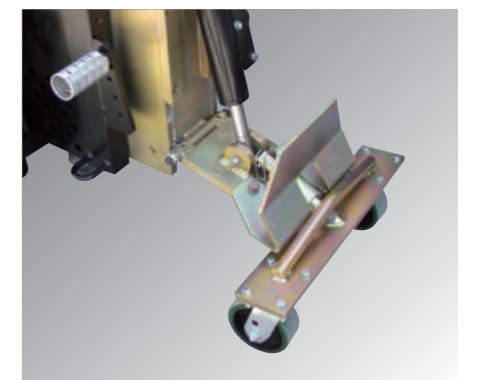
- Appropriately named, this machine offers battery run times exceeding the average eight-hour day.
- It has the ability to operate through an entire workday (8-12 hours) without requiring a battery change, recharge or electrical cord assistance.
- The on-board, built-in charging system has the versatility to plug into any outlet.
- The higher machine weight enables delete more effective removal work using wider blades or chisels.

ADB - High-speed Version

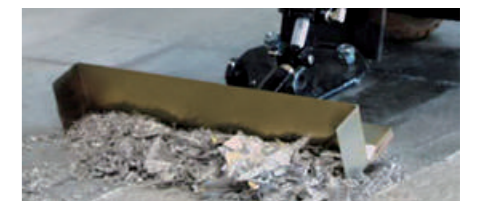
- Faster speed and increased weight allows for at least 30% higher productivity.
- Included is the hydraulic front angle plate for quick and precise modification of the tilt angle.



Quick and easy replacement of cutting head and blade.



Front Wheel Assembly (Optional)
Allows stability and safe transportation over any surface.



Tile box for fast cleanup and debris collection.

Hydraulic Front Angle Plate

The hydraulic front angle plate can be supplied and fitted on all versions of the ride-on scraper as an alternative to manual adjustment.

With the hydraulic front angle plate, blade angles can be adjusted quickly and precisely by the operator without having to get off the machine. This saves time, especially on building sites with different floor removal requirements.

Also an additional 90kg above the blade ensures an increase in removal capacity.



Low position



High position



STM & ADB Selection of Blades, Shanks and Other Optional Accessories

Ref#	Description (W x L) mm (inches)	Thickness mm (inches)	Application	STM	Ride-on	Ride-on Accessory Set	
						Large	Small
Standard Blades							
	800104	145 x 102 (6" x 4")	1.6 (0.062")	Removal of wood flooring	✓	✓	
	700102	152 x 127 (6" x 5")	1.6 (0.062")		✓	✓	
	700103	254 x 76 (10" x 3")	1.6 (0.062")		✓		
Premium Blades							
	400210	152 x 76 (6" x 3")	1.6 (0.062")	Ultra high quality spring steel is very hard for extended blade life.	✓		✓
	400220	203 x 76 (8" x 3")	1.6 (0.062")		✓	✓	✓
	800103	254 x 76 (10" x 3")	1.6 (0.062")	Works on all glued-down carpets, VCT, VAT, rubber tile, cork, re-scraping adhesive, elastomeric coatings.	✓	✓	✓
	400240	304 x 76 (12" x 3")	1.6 (0.062")		✓	✓	✓
	400250	355 x 76 (14" x 3")	1.6 (0.062")		✓	✓	✓
	400260	685 x 76 (27" x 3")	1.6 (0.062")			✓	✓
Heavy Duty Blades							
	400310	152 x 76 (6" x 3")	2.4 (0.094")	A heavy-duty blade that still has a little flex. Works on VCT, VAT, wood, tile, rubber epoxy, thinset, elastomeric coatings, glued ceramic, etc.	✓	✓	✓
	400320	203 x 76 (8" x 3")	2.4 (0.094")		✓	✓	✓
	700104	254 x 76 (10" x 3")	2.4 (0.094")		✓	✓	✓
	400340	304 x 76 (12" x 3")	2.4 (0.094")		✓	✓	✓
	400350	355 x 76 (14" x 3")	2.4 (0.094")		✓	✓	✓
	400360	685 x 76 (27" x 3")	2.4 (0.094")			✓	✓
Extra Heavy Duty Blades							
	700106	152 x 76 (6" x 3")	4.5 (0.18")	Ultra tough coatings, ceramic & hardwood.	✓	✓	
	700105	152 x 76 (6" x 3")	6.35 (0.25")	Extremely hard, high abrasion wood, tile, lighter ceramic.	✓	✓	
Increased Angle Blades							
	400480	200 x 75 (8" x 3")	1.6 (0.062")	Mainly used for VCT, but can be used on most other applications. Supplies more of an angle when needed.	✓	✓	
	400481	250 x 75 (10" x 3")	1.6 (0.062")		✓	✓	
Self-scoring Blades							
	800101	152x 102 (6" x 4")	1.6 (0.062")	Tough, long-lasting, self-scoring blades. 90° angled self-scoring wings. Works on vinyl, soft to medium PVC, linoleum, carpet tiles and soft cork.	✓		
	800106	223 x 76 (9" x 3")	1.6 (0.062")			✓	
	700108	223 x 76 (9" x 3")	1.6 (0.062")		✓		
	700101	305 x 76 (12" x 3")	1.6 (0.062")		✓	✓	✓
	700107	360 x 76 (14" x 3")	1.6 (0.062")		✓	✓	
	400495	40 x 40 (1 1/2" x 1 1/2")	2.4 (0.094")			✓	
	400496	80 x 40 (3 1/2" x 1 1/2")	2.4 (0.094")			✓	
Razor/ Scraper Blades							
	700150	280 x 22 (11" x 0.87") (10 pcs set)	1 (0.045)	Razor sharp and super hard, for scraping thin epoxies and thin mil coatings like urethane.	✓		
	400880	305 x 29 (12" x 1.14") (50 pcs set)	1 (0.045)			✓	✓

Ref#	Description (W x L) mm (inches)	Thickness mm (inches)	Application	STM	Ride-on	Ride-on Accessory Set	
						Large	Small
V Blades							
	400370	155 x 75 (12" x 3")	2.4 (0.094")	Pre-cut as well as removal of sport floor coverings.		✓	
Straight Shank W/Carbide Tips							
	400451	50 x 100 (2" x 4")	12.7 (0.500")	For ceramic tiles, thick epoxy coatings and thermoplastic coatings. With carbide tip for extended usage.		✓	
	400456	100 x 100 (4" x 4")	12.7 (0.500")			✓	
	400452	152 x 100 (6" x 4")	12.7 (0.500")			✓	
Angle Shank Blade							
	400453	255 x 76 (10" x 3")		Angled shank and cutting head for precise setting of cutting angle. With carbide tip for extended usage.		✓	✓
	400454	305 x 76 (12" x 3")				✓	✓
	400473	355 x 76 (14" x 3")		Helps lift up difficult to remove floor coverings from underneath. Especially suited to remove glued or nailed down parquet floors. Also to be used for PVC or ceramic tiles. With carbide tip for extended usage.		✓	
	400474	685 x 76 (27" x 3")				✓	
Angle Shank Blade W/Carbide Tips							
	400478	90 x 200 (3 1/2" x 3")		Long length allows blade to easily slide under tough materials. Works well on most ceramics and VCT. Carbide tip for a long-lasting sharp edge.		✓	
	400479	50 x 270 (2" x 10 5/8")				✓	
	400482	90 x 270 (3 1/2" x 10 5/8")				✓	
Ceramic Shank Blade							
	400460	50 x 150 (2" x 6")		Removal of ceramic tiles and filler. Strong carbide tip for a long-lasting sharp edge.		✓	✓
	400461	100 x 150 (4" x 6")				✓	
	400462	150 x 150 (6" x 6")				✓	✓
Cutting Heads (Blade Holder)							
	400497	40 (1 1/2)		For holding blades with max. width 40mm	✓		
	400498	80 (3 1/8)		For holding blades with max. width 80mm	✓		
	400110	152 (6")		For holding blades with max. width 152mm	✓	✓	
	400120	203 (8")		For holding blades with max. width 203mm	✓	✓	✓
	400130	254 (10")		For holding blades with max. width 254mm	✓	✓	
	400140	305 (12")		For holding blades with max. width 305mm	✓	✓	✓
	400880	305 (12")		For holding razor blades.	✓	✓	✓
	400150	355 (14")		For holding blades with max. width 355mm	✓	✓	
	400160	685 (27")		For holding blades with max. width 685mm	✓	✓	✓
Other Optional Accessories							
	400205	Tile Box Blade with rubbish collecting box. It works for windrows and quickly cleans up and collects tile debris. Attaches to 27" cutting head #400160 (required).				✓	✓
	400485	Cutting Head Extension Extension for cutting head to reach inaccessible areas and for thick foam or parquet flooring.				✓	